



CALIFORNIA UMBRELLA

for Contract

The California Umbrella for Contract Collection is our proud offering of Shade products designed to serve the contract industry. Simple, Traditional, and with the strength to withstand the rigors of heavy usage, that is the hallmark of every item in this collection. When you design the perfect outdoor space, these products will make the finishing touches the most gratifying.

Relentless pursuit of performance and value in our products has yielded a wonderful set of results for anyone looking to achieve the classic wood market umbrella look. Our Wood Market Umbrella Series' has been upgraded to deluxe fiber Hardwood! Beautiful finishing, dramatic flourishes, and outstanding performance are just the beginning when you select an umbrella from this collection that uses wood. We are calling it our Flex-wood series, and you will love how beautiful and functional it is.

Fiberglass is well represented in the California Umbrella for Contract collection of shade products. You will find the most robust fiberglass components in the industry along with stainless steel hardware, High density resin, and Zinc plated hubs, ensuring that the space created with these products can be enjoyed by as many users as possible. For you business or for your home, our Contract umbrellas provide a designed toughness which rejects the idea that commercial grade shade has to be over-priced in order to be over-built.

Look ahead to find out what the ultimate umbrella really looks like...

EP 508

Size: 508 (16" x 8 Ribs) • Pole Diameter: 2" • Patented "Slide Lift" Umbrella System
4mm Aluminum Pole Wall thickness • Triple Hub System • Oversized Aluminum Ribs Dual

Pole: 002 Silver Anodized
Cover: 58024 Decade Pewter



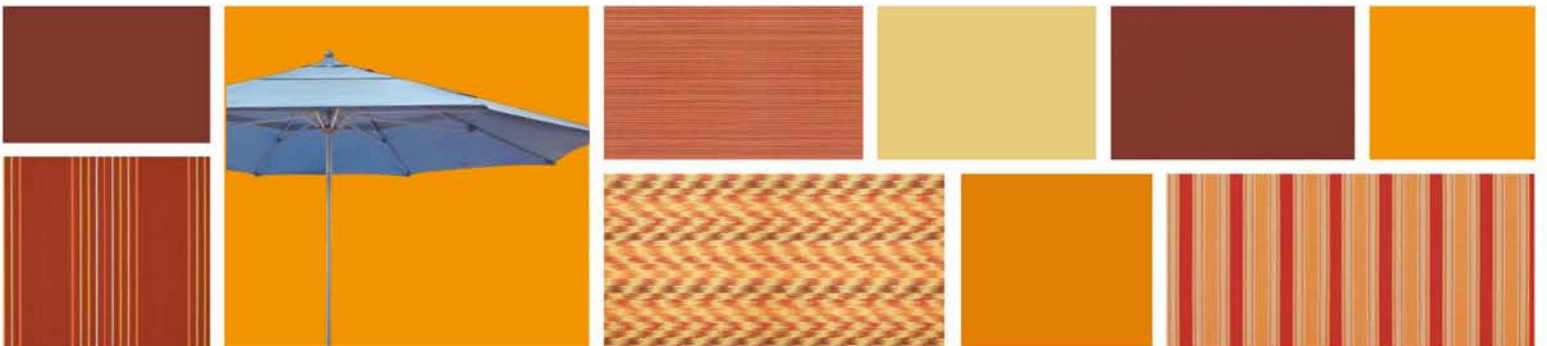
FABRIC
OPTIONS:



POLE
SWATCHES:



BASES TB11 (sold separately), TB50 Ground Anchor (sold separately) • *Not suitable for use with a table*
Closed Height: 160", Opened Height: 130", Open Clearance: 98", Closed Rib Clearance: 54"



Size: 1118 (11' x 11' Square x 8 Ribs) • Pole Diameter: 2" • Patented "Slide Lift" Umbrella System
Triple Hub System • FIBERGLASS RIBS • Aluminum center pole • Resin Hub and Housing

EF 1118

COMMERCIAL
GRADE



FABRIC
OPTIONS:

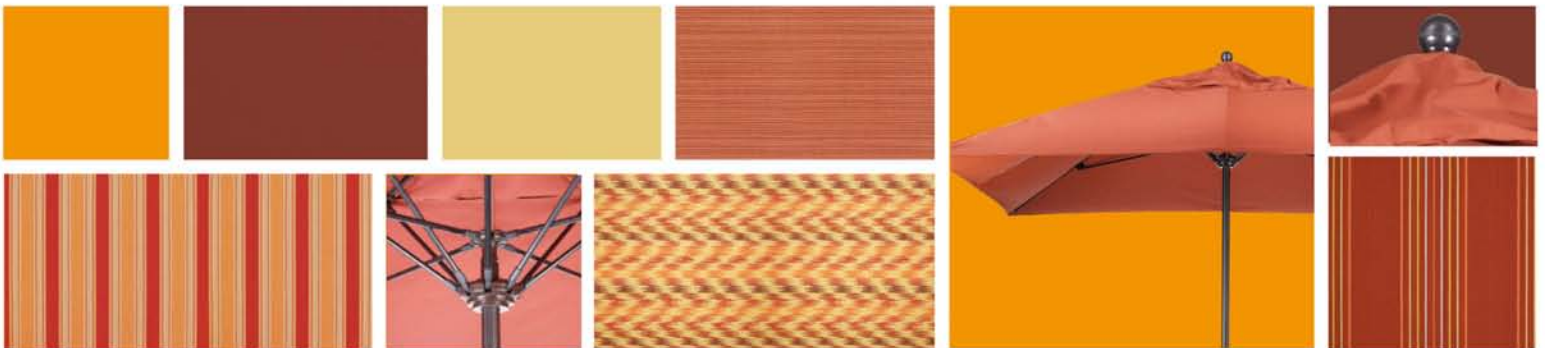


POLE
SWATCHES:



BASES CFMT110, CRLY903, CRLY905, TB48, TB50 Ground Anchor PROTECTIVE COVER UC101

Not suggested for use with a table



LUXY 118

Size: 118 (11' x 8 Ribs) • Pole Diameter: 1.5" • Pulley Lift • FIBERGLASS RIBS • Stainless Steel Center pole • Zinc Plated Hub • Single piece pole with over 2mm wall thickness Reinforced Rib Joints • Stainless steel hardware and Pulleys • DOUBLE WIND VENT • Top seller

COMMERCIAL GRADE



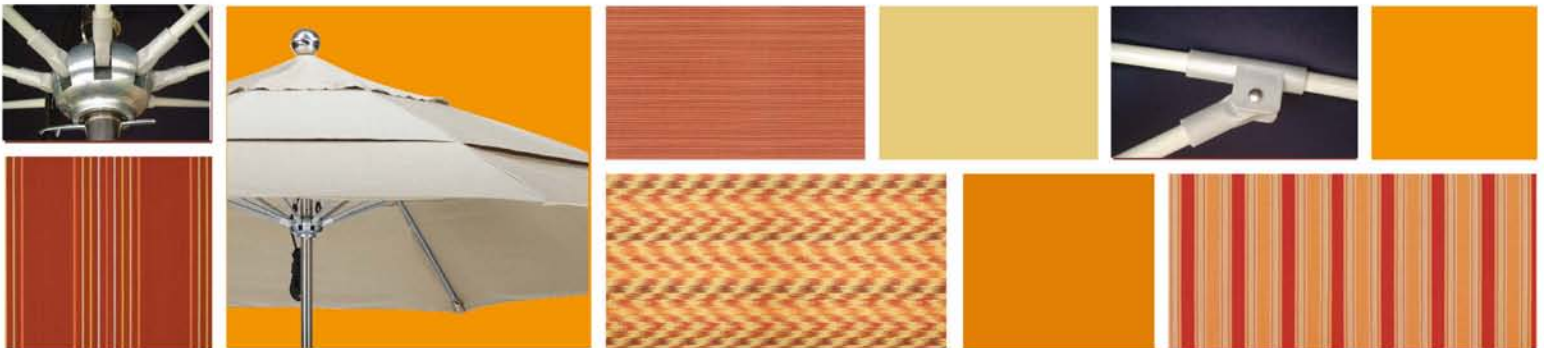
FABRIC OPTIONS:



POLE SWATCHES:



BASES CFMT110, CFMT160, CFMT172, CRLY903, CRLY905, TB48 PROTECTIVE COVER UC101



Size: 908 (9' x 8 Ribs) • Pole Diameter: 1.5" • FIBERGLASS RIBS • Stainless Steel Center polet
Pulley Lift • Zinc Plated Hub • Single piece pole with over 2mm wall thickness
Reinforced Rib Joints Stainless steel hardware and Pulleys • Top seller

LUXY 908

COMMERCIAL
GRADE



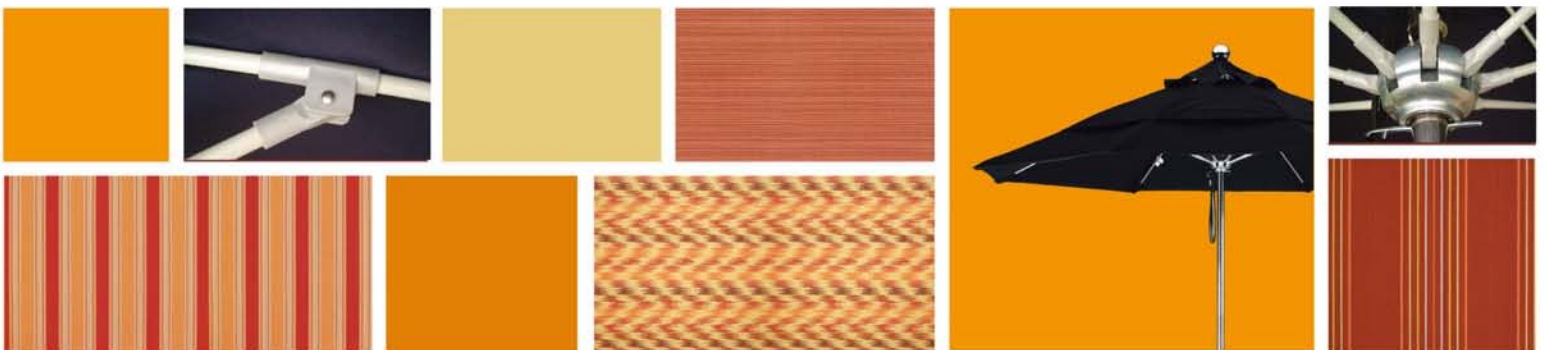
FABRIC
OPTIONS:



POLE
SWATCHES:



BASES CFMT110, CFMT160, CFMT172, CRLY903, CRLY905, TB48 PROTECTIVE COVER UC100



EFFO 908

Size: 908 (9' x 8 Ribs) • Pole Diameter: 1.5" • Pulley Lift • FIBERGLASS RIBS • FIBERGLASS Center pole
ALL FIBERGLASS Hub and Housing • 2 section pole with almost 4mm wall thickness
Reinforced Rib Joints • Stainless steel hardware and Pulleys • Top seller

ALL FIBERGLASS

COMMERCIAL GRADE



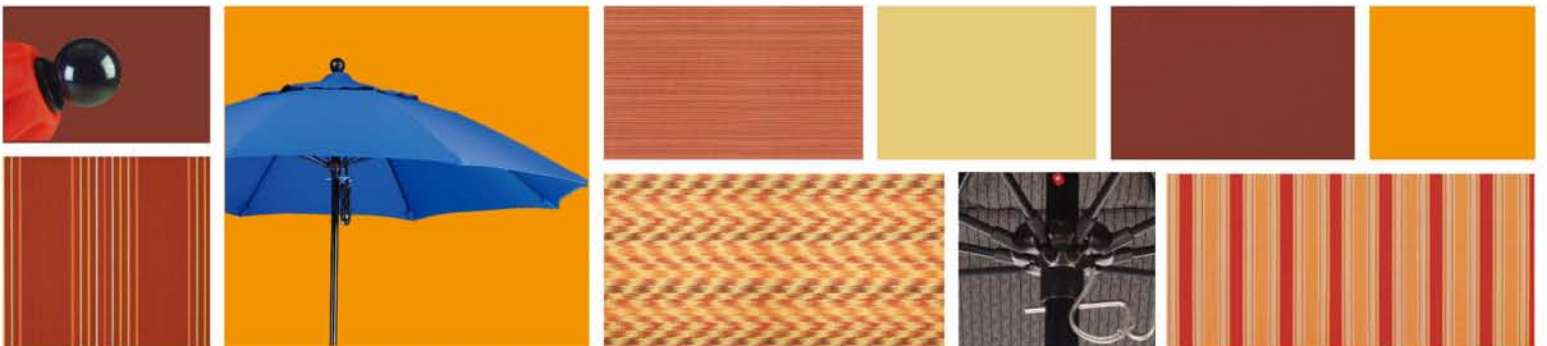
FABRIC OPTIONS:



POLE SWATCHES:



BASES CFMT110, CFMT160, CFMT172, CRLY903, CRLY905, TB48 PROTECTIVE COVER UC100



Size: 758 (7.5' x 8 Ribs) • Pole Diameter: 1.5" • Push Lift • FIBERGLASS RIBS • ALL FIBERGLASS Center pole • ALL FIBERGLASS Hub and Housing • 2 section pole with almost 4mm wall thickness Reinforced Rib Joints • Stainless steel hardware and Pulleys • Top seller

EFFO 758

ALL FIBERGLASS
COMMERCIAL GRADE



FABRIC OPTIONS:

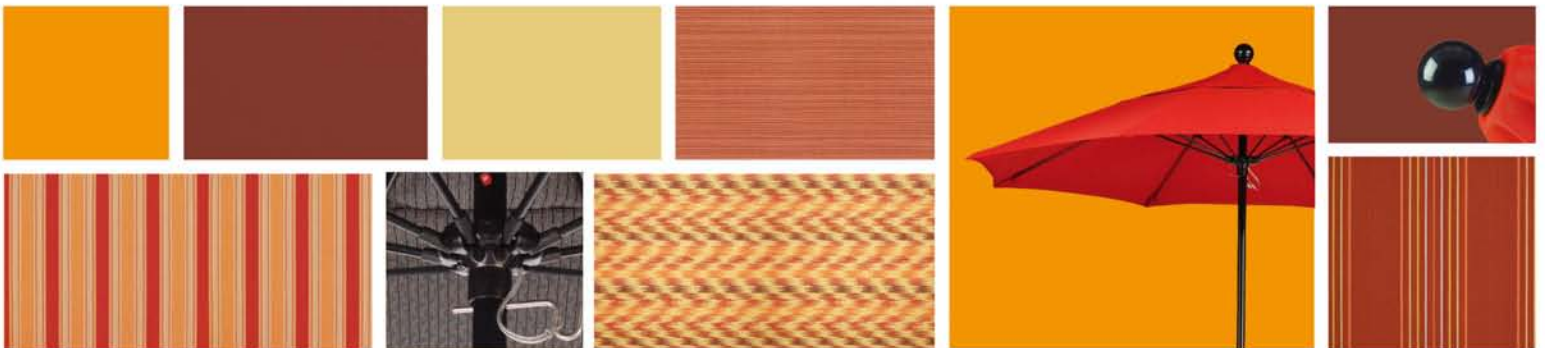


POLE SWATCHES:



BASES CFMT110, CFMT160, CFMT172, CRLY903, CRLY905, TB48

PROTECTIVE COVER UC100



ALTO 118

Size: 118 (11' x 8 Ribs) • Pole Diameter: 1.5" • Pulley Lift • 12.7mm FIBERGLASS RIBS • Aluminum Center pole • Zinc Plated Hub and Housing • 2 section pole with over 2mm wall thickness Reinforced Rib Joints • Stainless steel hardware and Pulleys
 DOUBLE WIND VENT Standard • Top seller

COMMERCIAL GRADE



Pole: 117 Bronze
 Cover: 5425 Sky Blue DWV
 Base: CFMT172 Black

FABRIC OPTIONS:



POLE SWATCHES:



117 BRONZE

170 MATTED WHITE

002 SILVER ANODIZED

BASES CFMT110, CFMT172, CRLY903, CRLY905, TB48

PROTECTIVE COVER UC101



Size: 908 (9' x 8 Ribs) • Pole Diameter: 1.5" • Pulley Lift • 12.7mm FIBERGLASS RIBS • Aluminum Center pole • Zinc Plated Hub and Housing • 2 section pole with over 2mm wall thickness Reinforced Rib Joints • Stainless steel hardware and Pulleys • Top seller

ALTO 908

COMMERCIAL GRADE



Pole: 117 Bronze
Cover: 5420 Mineral Blue

FABRIC OPTIONS:



POLE SWATCHES:



117 BRONZE

170 MATTED WHITE

002 SILVER ANODIZED

BASES CFMT110, CFMT160, CFMT172, CRLY903, CRLY905, TB48

PROTECTIVE COVER UC100



ALTO 758

Size: 758 (7.5' x 8 Ribs) • Pole Diameter: 1.5" • Pulley Lift • FIBERGLASS RIBS • Aluminum Center pole • Zinc Plated Hub and Housing • 2 section pole with over 2mm wall thickness Reinforced Rib Joints • Stainless steel hardware and Pulleys • Top seller

COMMERCIAL GRADE



FABRIC OPTIONS:



POLE SWATCHES:



BASES CFMT110, CFMT160, CFMT172, CRLY903, CRLY905, TB48 PROTECTIVE COVER UC100



Size: 604 (6' x 6' Square x 4 Ribs) • Pole Diameter: 1.5" • Pulley Lift • 12.7mm FIBERGLASS RIBS
Aluminum Center pole • Zinc Plated Hub and Housing • 2 section pole with over 2mm wall thickness
Reinforced Rib Joints • Stainless steel hardware and Pulleys • Top seller

ALTO 604

COMMERCIAL
GRADE



Pole: 117 Bronze
Cover: 5440 Brick
Base: CFMT172 Black



FABRIC
OPTIONS:



POLE
SWATCHES:



117
BRONZE



170
MATTED
WHITE



002
SILVER
ANODIZED

BASES CFMT110, CFMT160, CFMT172, CRLY903, CRLY905, TB48

PROTECTIVE COVER UC100



FLEX 118

Size: 118 (11' x 8 Ribs) • Pole Diameter: 2" • Pulley Lift • Single Piece Pole
 All fiberglass center pole made with FLEX-WOOD material • Reinforced rib joints
 Stainless steel hardware & pulleys • Fiberglass ribs made with FLEX-WOOD material

COMMERCIAL GRADE



Pole: FLEX-WOOD
 Cover: SA22 Beige
 Base: CFMT172 Black

FABRIC OPTIONS:



POLE SWATCHES:



FLEX-WOOD

BASES CFMT110, CRLY903, CRLY905, TB48 PROTECTIVE COVER UC101



Size: 908 (9' x 8 Ribs) • Pole Diameter: 1.5" • Pulley Lift
All fiberglass center pole made with FLEX-WOOD material • Reinforced rib joints
Stainless steel hardware & pulleys • Fiberglass ribs made with FLEX-WOOD material

FLEX 908

COMMERCIAL
GRADE



Pole: FLEX-WOOD
Cover: SA22 Beige
Base: CFMT172 Black



FABRIC
OPTIONS:



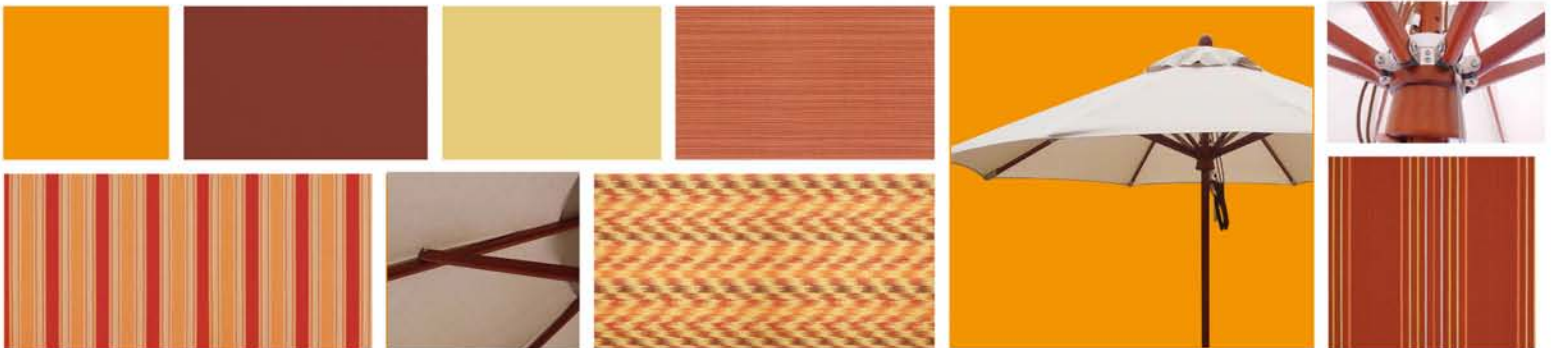
POLE
SWATCHES:



FLEX-WOOD

BASES CFMT110, CFMT160, CFMT172, CRLY903, CRLY905, TB48

PROTECTIVE COVER UC100



FLEX 758

Size: 758 (7.5' x 8 Ribs) • Pole Diameter: 1.5" • Pulley Lift
All fiberglass center pole made with FLEX-WOOD material • Reinforced rib joints
Stainless steel hardware & pulleys • Fiberglass ribs made with FLEX-WOOD material

COMMERCIAL
GRADE



Pole: FLEX-WOOD
Cover: SA22 Beige
Base: CFMT172 Black

FABRIC
OPTIONS:



POLE
SWATCHES:



FLEX-WOOD

BASES CFMT110, CFMT160, CFMT172, CRLY903, CRLY905, TB48 PROTECTIVE COVER UC100



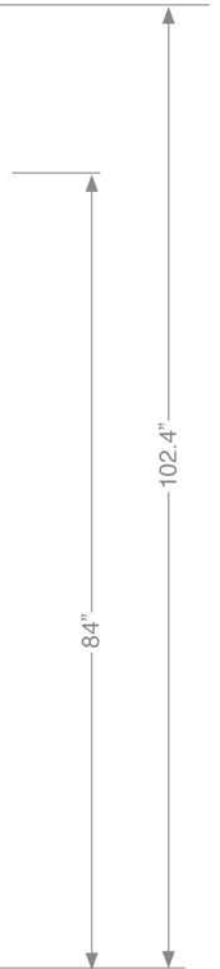
Size: 604 (6' x 6' Square x 4 Ribs) • Pole Diameter: 1.5" • Pulley Lift
All fiberglass center pole made with FLEX-WOOD material • Reinforced rib joints
Stainless steel hardware & pulleys • Fiberglass ribs made with FLEX-WOOD material

FLEX 604

COMMERCIAL
GRADE



Pole: FLEX-WOOD
Cover: 5440 Brick
Base: CFMT172 Black



FABRIC
OPTIONS:



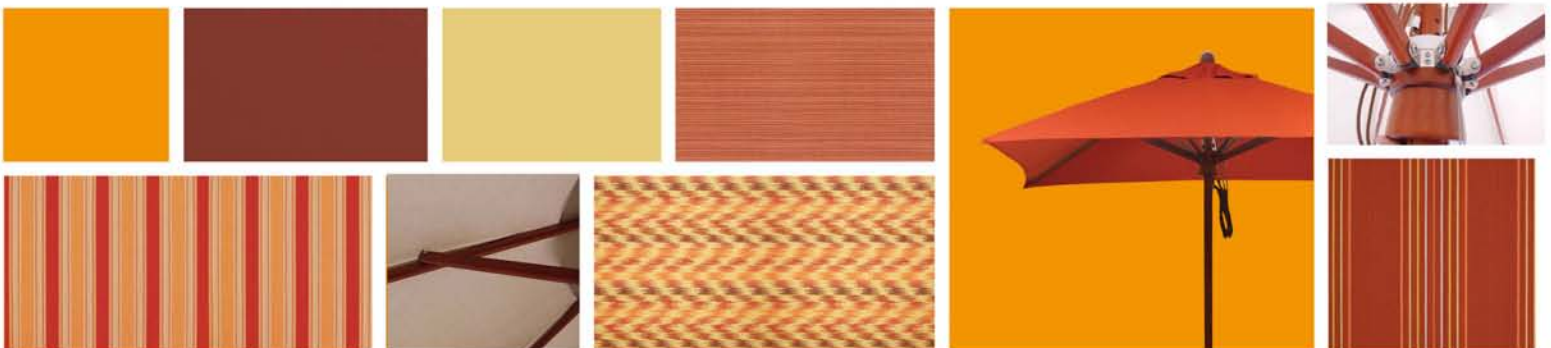
POLE
SWATCHES:



FLEX-WOOD

BASES CFMT110, CFMT160, CFMT172, CRLY903, CRLY905, TB48

PROTECTIVE COVER UC100



WOFA 118

Size: 118 (11' x 8 Ribs) • Pole Diameter: 2" • Pulley Lift • FIBERGLASS RIBS • 2" diameter HARD-WOOD POLE • Single Piece Pole • Reinforced Rib Joint • Stainless steel hardware and Pulleys
DOUBLE WIND VENT STANDARD • Top seller

NEW Finish

COMMERCIAL GRADE



FABRIC OPTIONS:



POLE SWITCHES:



BASES CFMT110, CRLY903, CRLY905, TB48

PROTECTIVE COVER UC101



Size: 908 (9' x 8 Ribs) • Pole Diameter: 1.5" • Pulley Lift • FIBERGLASS RIBS
HARDWOOD POLE • HARDWOOD HUB • Reinforced Rib Joints
Stainless steel hardware and Pulleys • Top seller

WOFA 908

NEW Finish

COMMERCIAL
GRADE



Pole: Stained Hardwood
Cover: 5422 Antique Beige
Base: CFMT172 Black



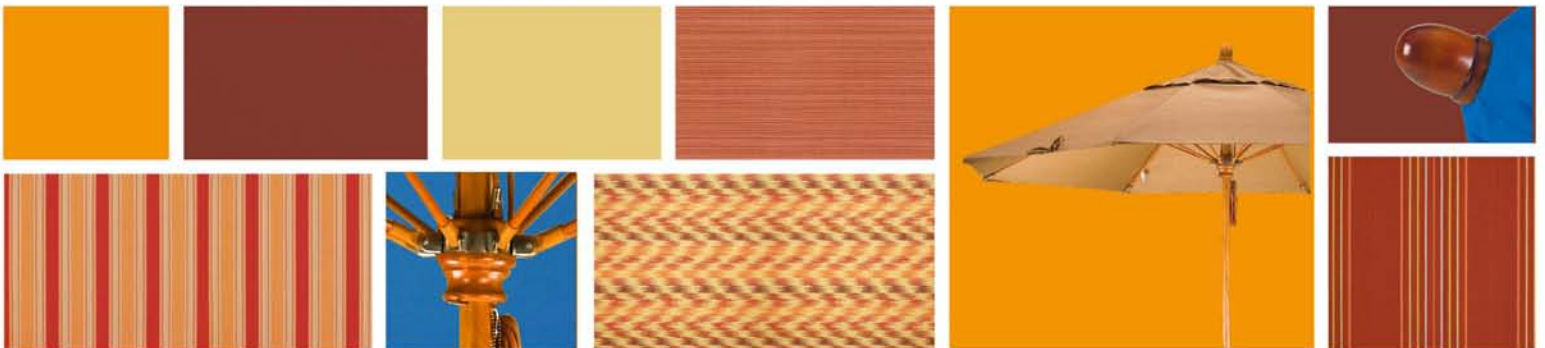
FABRIC
OPTIONS:



POLE
SWATCHES:



BASES CFMT110, CFMT160, CFMT172, CRLY903, CRLY905, TB48 PROTECTIVE COVER UC100



WOFA 758

Size: 758 (7.5' x 8 Ribs) • Pole Diameter: 1.5" • Pulley Lift • FIBERGLASS RIBS
HARDWOOD POLE • HARDWOOD HUB
Reinforced Rib Joints • Stainless steel hardware and Pulleys • Top seller

NEW Finish

COMMERCIAL GRADE



FABRIC OPTIONS:



POLE SWITCHES:



HARDWOOD

BASES CFMT110, CFMT160, CFMT172, CRLY903, CRLY905, TB48 PROTECTIVE COVER UC100



Size: 604 (6' x 6' x 4 Ribs) • Pole Diameter: 1.5" • Pulley Lift • FIBERGLASS RIBS
HARDWOOD POLE • HARDWOOD HUB • Reinforced Rib Joints
Stainless steel hardware and Pulleys • Top seller

WOFA 604

NEW Finish

COMMERCIAL GRADE



FABRIC OPTIONS:



POLE SWATCHES:



BASES CFMT110, CFMT160, CFMT172, CRLY903, CRLY905, TB48

PROTECTIVE COVER UC100



MARE 908

Size: 908 (9' x 8 Ribs) • Pole Diameter: 1.5" • Pulley Lift • HARDWOOD RIBS
HARDWOOD POLE • HARDWOOD HUB • Reinforced Rib Joints
Stainless steel hardware and Pulleys

COMMERCIAL
GRADE

NEW
FINIAL DESIGN



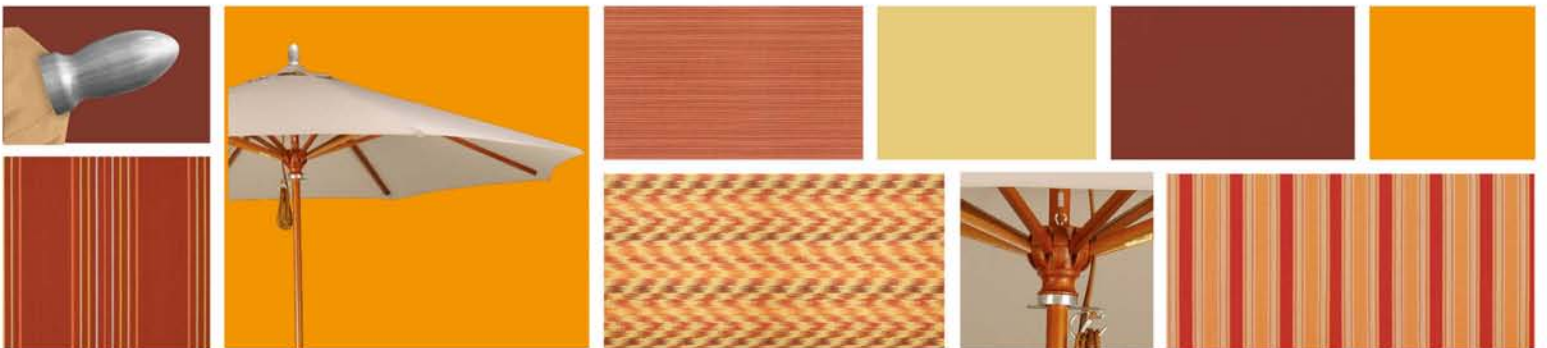
FABRIC
OPTIONS:



POLE
SWATCHES:



BASES CFMT110, CFMT160, CFMT172, CRLY903, CRLY905, TB48 PROTECTIVE COVER UC100



Size: 758 (7.5' x 8 Ribs) • Pole Diameter: 1.5" • Pulley Lift • HARDWOOD RIBS • HARDWOOD POLE
HARDWOOD HUB • Reinforced Rib Joints • Stainless steel hardware and Pulleys

MARE 758

COMMERCIAL
GRADE

NEW
FINIAL DESIGN



FABRIC
OPTIONS:

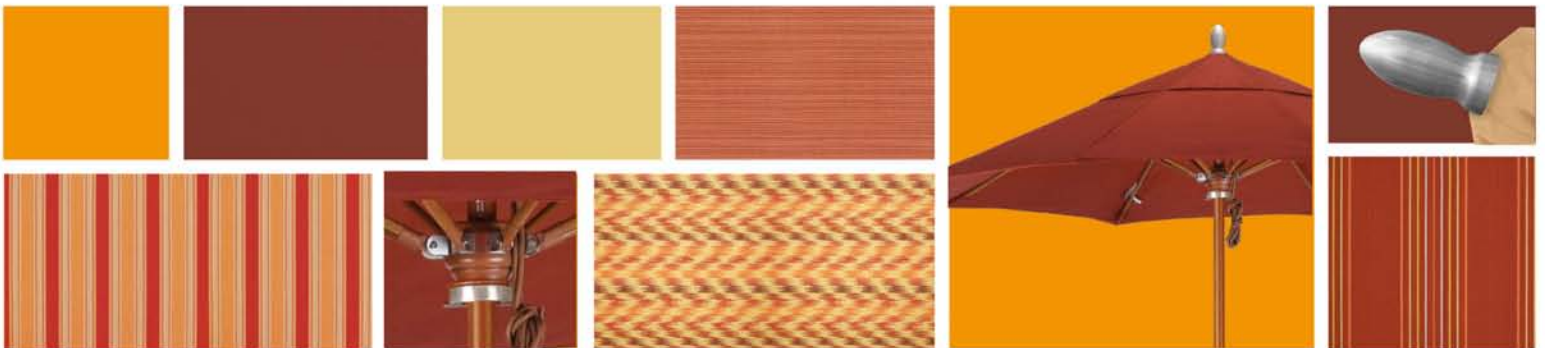


POLE
SWATCHES:



BASES CFMT110, CFMT160, CFMT172, CRLY903, CRLY905, TB48

PROTECTIVE COVER UC100



MARE 604

Size: 604 (6' x 6' x 4 Ribs) • Pole Diameter: 1.5" • Pulley Lift • HARDWOOD RIBS • HARDWOOD POLE
HARDWOOD HUB • Reinforced Rib Joints • Stainless steel hardware and Pulleys

COMMERCIAL
GRADE

NEW
FINIAL DESIGN



FABRIC
OPTIONS:



POLE
SWATCHES:



BASES CFMT110, CFMT160, CFMT172, CRLY903, CRLY905, TB48 PROTECTIVE COVER UC100



LOGO BRELLA

BY CALIFORNIA UMBRELLA



California Umbrella offers a complete Logo Umbrella Program for the highest level of customization. We will work with you to dial in the most elegant and cost efficient shade solution for your Business, School, Event, or Personal use. Your project is managed from concept to production in order to ensure accuracy, and our process makes it easy to design your Logo Umbrella. Call for pricing details and guidelines to get your project completed faster than you thought possible.

**Multi Color and single Color Logos • 2, 4 or 8 panels • Valance Printing
Any color fabric • And much more!**





CFMT 160

WEIGHT: 50 LBS
 MATERIAL: STEEL COVER WITH CONCRETE
 POLE DIAMETER: 1.75"
 COLORS: BLACK, BRONZE, WHITE, CHAMPAGNE
 Standard with two pole sizes for free standing or table set

AVAILABLE COLORS



174 MATTED WHITE



900 CHAMPAGNE



117 BRONZE



201 BLACK



CFMT 172

WEIGHT: 75 LBS
 MATERIAL: STEEL COVER WITH CONCRETE
 POLE DIAMETER: 1.75"
 COLOR: BLACK, BRONZE
 Wheels for easy movement!

AVAILABLE COLORS



117 BRONZE



201 BLACK



CFMT 110

WEIGHT: 110 LBS
 MATERIAL: CONCRETE WITH RESIN COVER
 POLE DIAMETER: 2"
 COLOR: BLACK
 Removable Wheels



RL 80

2 SECTION FILLABLE BASE
 MATERIAL: RESIN PLASTIC
 COLOR: BRONZE

AVAILABLE COLORS



117 BRONZE



TB48

WEIGHT: MUST BE ADDED
 MATERIAL: ALUMINUM
 COLOR: BRONZE
 POLE DIAMETER: 2"

AVAILABLE COLORS



117 BRONZE



CRLY 905

WEIGHT: 110 LBS
 MATERIAL: GALVANIZED STEEL
 POLE DIAMETER: 2"
 COLOR: GALVANIZED

30" Free Standing
 Tube Available

AVAILABLE
 COLORS



GALVANIZED



CRLY 903

WEIGHT: 95 LBS
 MATERIAL: CAST IRON
 POLE DIAMETER: 2.25"
 COLOR: BLACK

1.5" pole adapter

AVAILABLE
 COLORS



302
 MATTED BLACK



PAVER

WEIGHT: 35 LBS PER QUADRANT
 MATERIAL: CONCRETE EPOXY
 COMBINATION
 COLOR: DARK BRONZE



AVAILABLE
 COLORS



DARK BRONZE



TB 50

GROUND ANCHOR
 POLE ADAPTER: 1.5"
 POLE DIAMETER: 2.25"
 COLOR: GALVANIZED

AVAILABLE
 COLORS



GALVANIZED



TB11

WEIGHT: MUST BE ADDED
 MATERIAL: STEEL
 COLOR: GREY POWDER COAT
 POLE DIAMETER: 2"

AVAILABLE
 COLORS



GALVANIZED

REPLACEMENT COVERS

Now you can place orders directly for a replacement cover for an existing model, or place an order for your umbrella and get multiple colors.

11' Cover

C118-OLEFIN
C118-PACIFICA
C118-SUNBRELLA



C118-F03-DWV



C118-SA21-DWV



C118-5414-DWV

9' Cover

C908-OLEFIN
C908-PACIFICA
C908-SUNBRELLA



C908-F22



C908-SA36



C908-5432

7.5' Cover

C758-OLEFIN
C758-PACIFICA
C758-SUNBRELLA



C758-F27



C758-SA53



C758-5413

To order-

Select canopy size and use the model number for a cover. (C758 for a 7.5" cover, C908 for a 9" cover, C118 for a 11' cover). Then add the fabric code for the color and fabric type of your requested cover.

DESIGNER CANOPY STYLES

Five unique and elegant designs with different choices of fabric colors.



DWV- DOUBLE WIND VENTS

*Standard for 11' Umbrellas
Not available on square covers*



AL- ALTERNATING PANELS

Not available on square covers



ED- 9" EDGE DESIGN

Not available on square covers



MA- MIDDLE ACCENT DESIGN

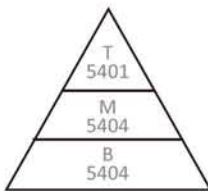
Not Available on square covers



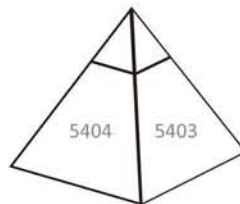
VA- 6" VALANCE DESIGN

Custom designs are available in Sunbrella fabric only
Design up-charge applied
Additional lead time required.

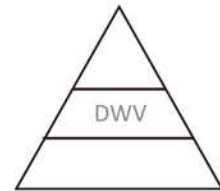
Placing an order for a custom made cover is simple.



ED, MA, VA- list the color on the **top**, **middle** and **bottom** sections of the cover.



AL - list the two choices that will alternate around the canopy.



DWV- Choose cover fabric and note "DWV" afterwards.

TO ORDER CUSTOM COVER DESIGNS INCLUDE FABRIC CHOICES AND PLACEMENT



Edge Design Example
= GSCU908174-5452-5404-5452-ED

 Frame Cover

Below you will note the different fabric Programs California Umbrella offers with all of our Umbrella models. All shipping lead times are based on Availability of the fabrics at our California facilities.

California Umbrella Is Proud to Present our First Ever line of proprietary Fabrics for our Shade products called PACIFICA



When you see the Pacifica Logo by one of the Umbrellas in this catalog, that means that this umbrella comes with your choice of Completed Covers available at our California based Facilities for this product in all 20 Available Fabric Color Selections. While supplies last, these Finished Covers will Ship out with the selected Umbrella frame within 10 business days!

Umbrella Frames: 11ft DWV Umbrellas 9ft SWV Umbrellas 7.5ft SWV Umbrella

SUNBRELLA EXPRESS



Sunbrella Express Colors are Premium Sunbrella Fabrics that are offered with your choice of Completed Covers available at our California based Facilities for this product. Express colors Ship out in 10 days and come in the following sizes on select Umbrella Frames:

Umbrella Frames: 11ft DWV Umbrellas 9ft SWV Umbrellas 7.5ft SWV Umbrella

SUNBRELLA STOCK



Sunbrella Stock Colors are Sunbrella Fabric selections that are kept in stock in our California Facility (subject to fabric availability) for production purposes. Umbrellas with this logo by them will ship out in 15 business days.

Umbrellas Frames: All Models

OLEFIN



California Umbrella uses the finest Olefin to create 10 different color selections available for Select 9ft Umbrella Models, Wherever you see this Logo, the Umbrellas will Ship out within 10 business days.

Umbrella Frames: 11ft DWV Umbrellas 9ft SWV Umbrellas 7.5ft SWV Umbrella

CUSTOM DESIGNER SUPPORT FABRICS



Umbrellas can typically be made using many types of Fabrics, California Umbrella is proud to offer your choice Sunbrella Custom fabrics for production of your new umbrella. Umbrellas ordered with these fabrics will ship out in 15 – 25 days based on availability of the fabrics only.

Umbrella Frames: All Models



PACIFICA, NEW by California Umbrella, is a Solution dyed Polyester Fabric perfected for use with our umbrellas! Our proprietary selection offers tremendous possibilities for color varieties and performance shade fabric. Pacifica Fabrics have:

- 4 year Fade Resistance Warranty
- 4 Year Rot and Mildew Warranty
- 20 fashionable and popular Color choices to pick from
- Domestic Availability in 11ft DWV Covers
- Domestic Availability in 9ft & 7.5ft SWV Covers
- The Fastest Lead time in the industry!



SA-01
PACIFIC BLUE



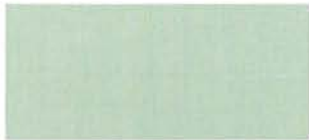
SA-03
RED



SA-04
NATURAL



SA-08
BLACK



SA-13
SPA



SA-17
TUSCAN



SA-21
PALM



SA-22
BEIGE



SA-26
CAPRI



SA-32
MOCHA



SA-36
BURGUNDY



SA-40
BRICK



SA-46
HUNTER GREEN



SA-52
SAPPHIRE



SA-53
CANVAS



SA-57
YELLOW



SA-61
TAUPE



SA-65
PURPLE



SA-11
GINKGO



SA-14
STRAW


Actual colors may vary from printed swatches. Please consult swatch booklet for the most accurate colors.

We support complete Sunbrella fabric colors. Including marine grade fabric as an option. Please call for details.

sunbrella™ A

Sunbrella A Grade fabrics are the Outdoor and Furniture Grade fabric of choice for most of the world's best outdoor furniture manufacturers. Made up of solids and stripe patterns, the A Grade of fabric offers tremendous choice and value. These colors are more naturally fade resistant under prolonged sun exposure, so your shade solution stays beautiful for years of use and enjoyment.



				
5401 PACIFIC BLUE	5402 GRANITE	5404 NATURAL	5408 BLACK	5410 AIR BLUE
				
5413 SPA	5414 WHEAT	5422 ANTIQUE BEIGE	5425 COCOA	5439 NAVY
				
5446 FOREST GREEN	5453 CANVAS	5457 SUNFLOWER YELLOW	5461 TAUPE	5476 HEATHER BEIGE
				
5486 TEAK	48020 SPECTRUM MIST	48022 SPECTRUM CILANTRO	48032 SPECTRUM DOVE	48080 SPECTRUM INDIGO
				
	56000 DOLCE MANGO	56001 DOLCE OASIS	5608 SEVILLE SEASIDE	

sunbrella™ 2A

Sunbrella AA Grade fabrics are enhanced to protect the more sensitive color from fading under even the most extreme sun exposure conditions. The Colors in this grade of fabric are more sensitive to UV exposure, and require increased protection built into the color process in order to ensure that your umbrella maintains the same vibrant look for years of use. Also included in this Grade of Fabric are some expanded options for special weaves in the fabric, all providing unique design appeal to go with that peak fabric performance.



			
5403 JOCKEY RED	5407 HENNA	5417 TUSCAN	5429 MACAW
			
5432 BAY BROWN	5440 TERRACOTTA	8318 LINEN SESAME	

Actual colors may vary from printed swatches. Please consult swatch booklet for the most accurate colors.


OLEFIN

Olefin fabrics are an excellent fabric choice for customers looking to shade their space on a budget without sacrificing quality. Made with high durability synthetic Olefin fibers, Olefin Fabrics offer improved fade resistance over lesser grade fabric materials like polyester and cotton without the added expense of acrylic canvas. Olefin fabrics are a strong value, so with some basic care they can give you several years of enjoyment. Olefin color selections match up perfectly with all the most popular colors on the market, so your shade solution is beautiful without breaking the budget.



F03
ROYAL BLUE



F04
WHITE



F08
HUNTER GREEN



F09
NAVY BLUE



F13
RED



F22
ANTIQUÉ BEIGE



F25
LEMON



F26
FROST BLUE



F27
SUNSET



F32
BLACK



F55
KIWI



F67
CHAMPAGNE



F69
TERRACOTTA



F71
TEAK



F72
STRAW



F76
WOVEN SESAME



F77
WOVEN GRANITE



FD10
TERRACE SEQUOIA



FD11
TERRACE FERN



FD12
TERRACE ADOBE



The following Color Codes are for Fabrics that are outside of our quick production options. California Umbrella is happy to offer production of your umbrella using any of these fabrics. Extended Lead times and charges may apply based on fabric availability and yardage requirements. Refer to Sunbrella.com for swatch images and specifications. Typical lead time is 15 – 25 business days.

sunbrella™ A

5401 48018
5402 48019
5404 48020
5408 48022
5410 48023
5413 48024
5414 48028
5415 48030
5416 48031
5420 48032
5422 48035
5424 48080
5425 48081
5426 48082
5428 48083
5438 48084
5439 48085
5446 48086
5447 54048
5448 56000
5452 56001
5453 56005
5456 56024
5457 56049
5461 56050
5468 56051
5470 56052
5471 51000-0000
5472 51000-0001
5473 51000-0005
5476 51000-0013
5484
5487
5488
5491
5492
5498
5499
5604
5606
5608
5610
5612
5621
5626
5630
5674
5695

sunbrella™ 2A

5403 54010
5405 54011
5406 56040
5407 56059
5409 56064
5412 56071
5417 56079
5421 56081
5429 56085
5432 56086
5436 56087
5440 56091
5445 56092
5451 56093
5462 56094
5477 56095
5601 56096
5602 57004
5603 58001
8300 58002
8304 58003
8306
8314
8317
8318
8319
8322
8351
8353
8374
8521
48026
48027
48029

sunbrella™ 3A

7704
7761
7774
7775
8005
8010
8011
8012
8013
8015
8016
8017
8019
8021
8024
8031
8041
8050
8051
8052
8053
8056
8057
8059
8060
8064
8065
8066
8067
8068
8069
8076
8077
8078
8079
8080
56068
56074
56075
56080
56083
56084
56090
56097
56098
57000
57001
57002
57003

sunbrella™ 4A

18000 40061-0004
18001 40061-0005
18003 40061-0006
18004 40061-0007
18005 40061-0008
18006 40061-0009
18007 40061-0010
18008 40061-0011
18009 40061-0012
18010 40061-0013
18011 40061-0014
18012 40061-0016
32000-0000 40061-0018
32000-0002 40061-0032
32000-0003 40061-0033
32000-0007 40061-0034
32000-0016 40245-0003
32000-0017 40245-0004
32000-0018 40245-0005
32000-0019 40245-0007
32000-0023 40245-0008
32000-0024 40278-0010
32005-0000 40278-0011
32008-0000 40278-0012
40014-0000 40278-0013
40014-0002 40278-0017
40014-0004 40308-0001
40014-0005 40316-0006
40014-0008 40329-0007
40014-0013 40329-0009
40014-0017 40332-0005
40014-0018 40332-0006
40014-0034 40332-0007
40014-0035 40332-0008
40014-0037 42033-0000
40014-0038 42033-0003
40014-0039 42033-0005
40014-0042 42033-0008
40014-0044 42033-0009
40014-0045 42035-0005
40014-0057 42035-0009
40014-0058 42066-0000
40014-0059 42066-0001
40014-0065 42066-0002
40014-0105 42067-0000
40046-0000 42068-0000
40046-0002 44036-0004
40046-0003 44098-0001
40046-0005 44098-0002
40046-0019 44098-0003
40046-0027
40046-0034
40046-0043
40046-0045
40046-0046
40046-0048
40046-0055
40061-0003

sunbrella™ 5A

1354-0001 45543-0000
1357-0001 45585-0000
30503-0000 45626-0001
40012-0075 45629-0000
40107-0011 45690-0000
40134-0003 45701-0001
40236-0005 45706-0000
40236-0009 45706-0001
40247-0002 45707-0002
40247-0004 45713-0003
41010-0005 45718-0000
42006-0002 45718-0001
42006-0004 45746-0001
42006-0005 45760-0002
42006-0006 45789-0000
42006-0007 45789-0001
42006-0009 45789-0004
42006-0011 45794-0003
42006-0012 45808-0000
42025-0002 45885-0000
42025-0003 45885-0001
42025-0005 45885-0004
42025-0008 45890-0001
42025-0009 45913-0003
42034-0000 45919-0000
42034-0004 45920-0000
42048-0005 45921-0004
42048-0009 45922-0000
42051-0000 45922-0001
44157-0000 45936-0000
44157-0002 46008-0012
44157-0003 46028-0000
44157-0004 46028-0007
44157-0005 47072-0004
44215-0000 47072-0005
45099-0003 70011-0000
45336-0000 70011-0001
45349-0001 70011-0002
45353-0004 70011-0005
45399-0000 70011-0006
45412-0001 70011-0007
45412-0004 70011-0008
45415-0000 7253-0000
45415-0001
45418-0000
45419-0001
45534-0000
45542-0000

PROTECTIVE COVERS

Extend the life of your shade with our easy to use protective covers.

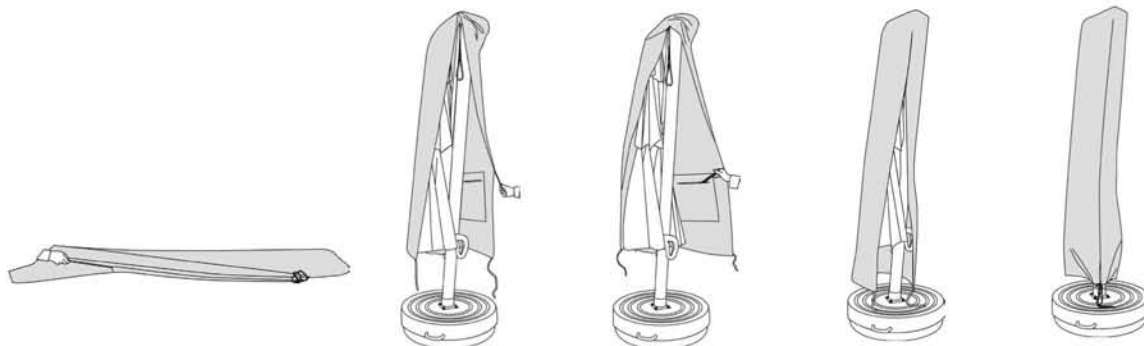


UC100 - FITS UMBRELLA UP TO 9'

UC101 - FITS UMBRELLAS UP TO 11'

UC102 - FITS VAST CANTILEVER SERIES

*Water Proof • 99% Sun blocking to prevent fade to umbrella fabric
Wind resistance when fully closed*



DISPLAYS & BANNERS



DISD 918A

WEIGHT: 27.18 LBS
 MATERIAL: CAST IRON
 DIAMETER: 1.6" EACH HOLE
 COLOR: BLACK

18 hole display rack for store display or storage

AVAILABLE COLORS



302 MATTED BLACK



California Umbrella now offers convenient display aid using miniature umbrellas, so customers can specify canopy choices with ease.



Attract customers with banners!



Distributed by:

Unique Expressions
uniqshasta@charter.net
www.uniqueexpressions.net
www.outdoorfabricunique.com